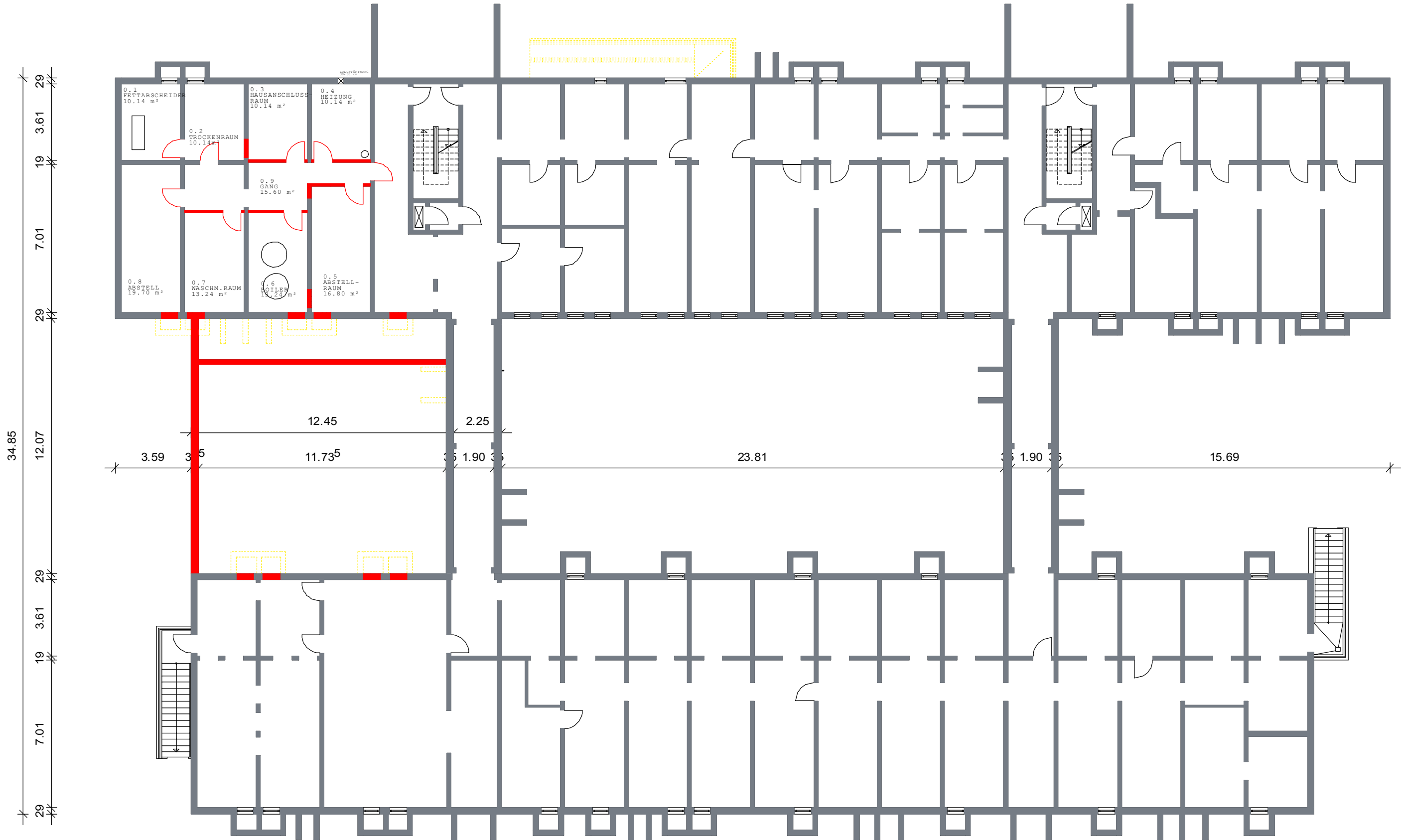


29 2.81 19 2.81 19 2.81 19 2.81 19 5.81 19 2.81 19 2.81 19 2.81 19 2.81 19 2.81 19 2.81 19 2.81 19 5.81 19 2.81 19 2.81 19 2.81 19 2.81 29



29 2.81 19 2.81 19 5.83 19 2.20 19 2.81 19 2.81 19 2.81 19 2.81 19 2.81 19 2.81 19 2.81 19 2.20 19 2.81 19 2.81 19 2.81 19 2.81 29

53.19