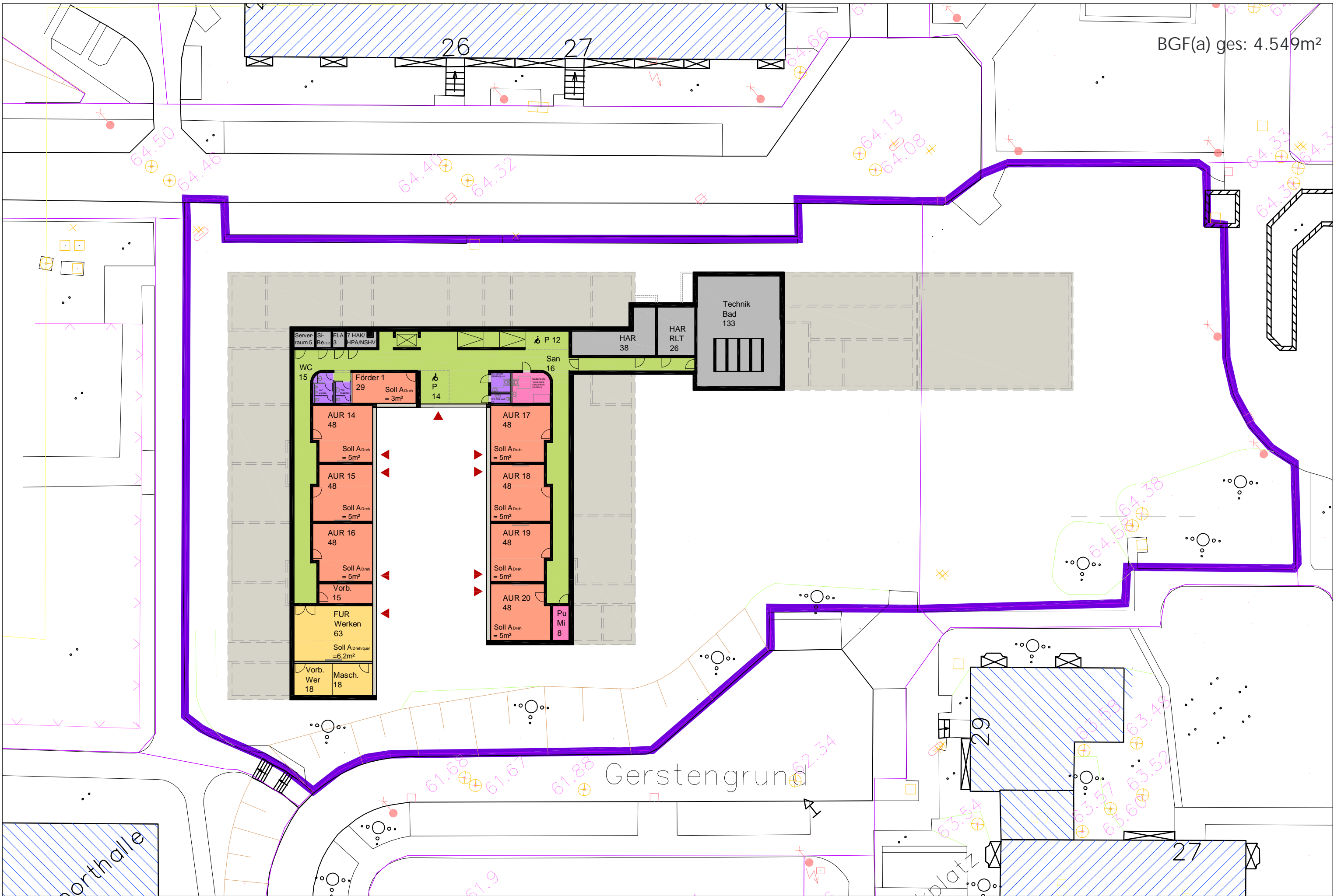


BGF(a) ges: 4.549m²

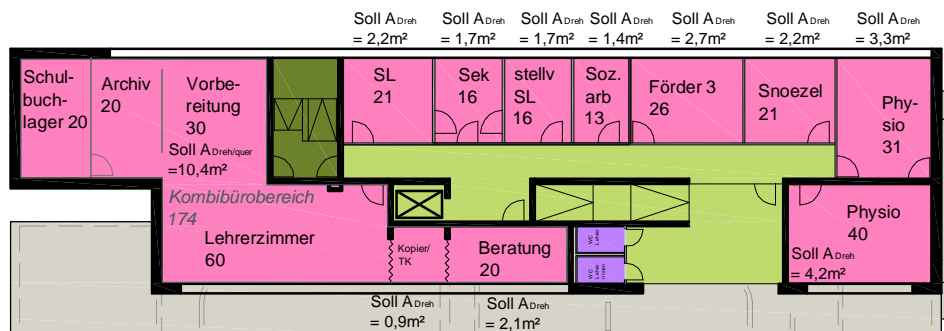


BGF(a) ges: 4.549m²



Gerstengrund

BGF(a) ges: 4.549m²



Gerstengrund

Ankleide
räume 23

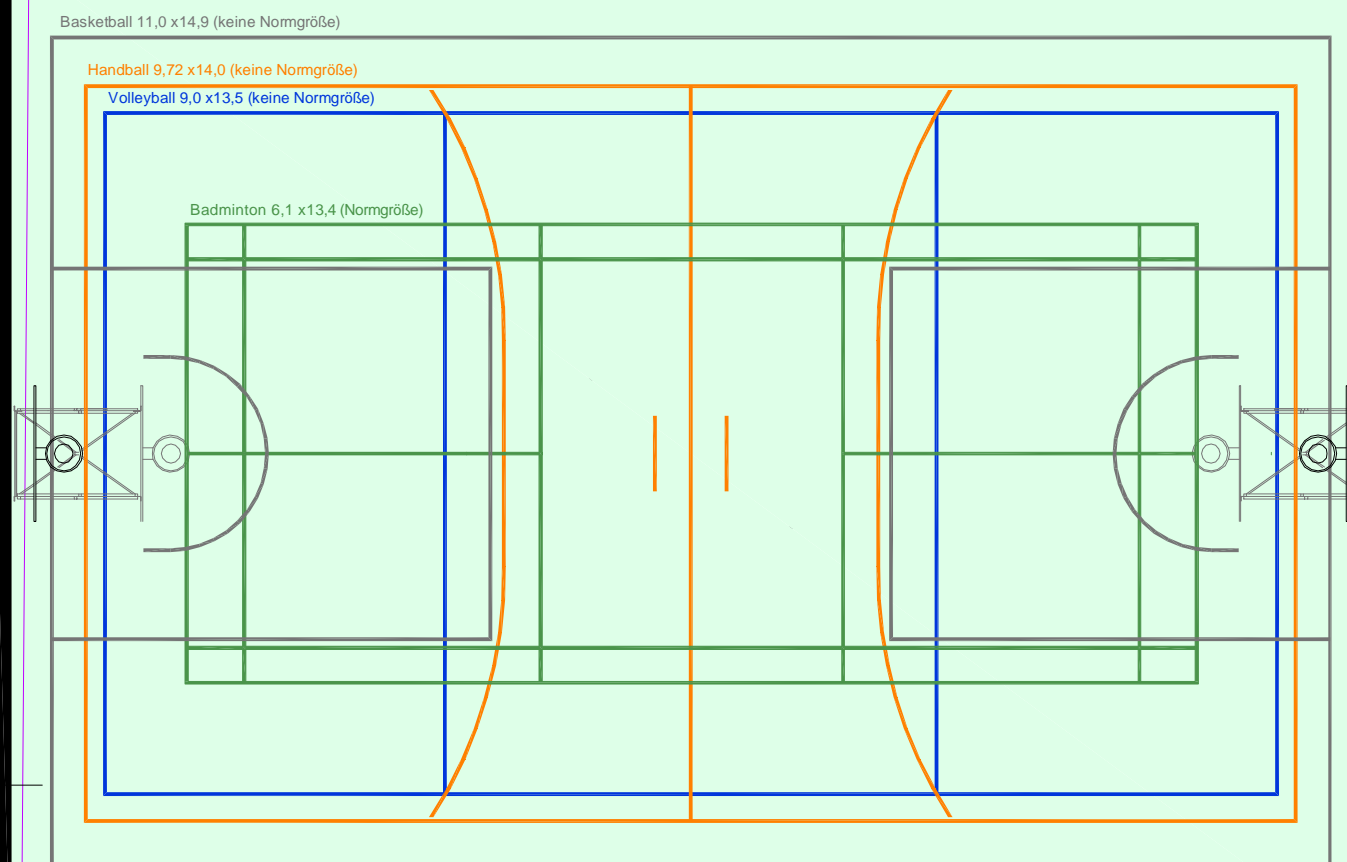
WR
7

Umkl.
Leh.
14

 P 10

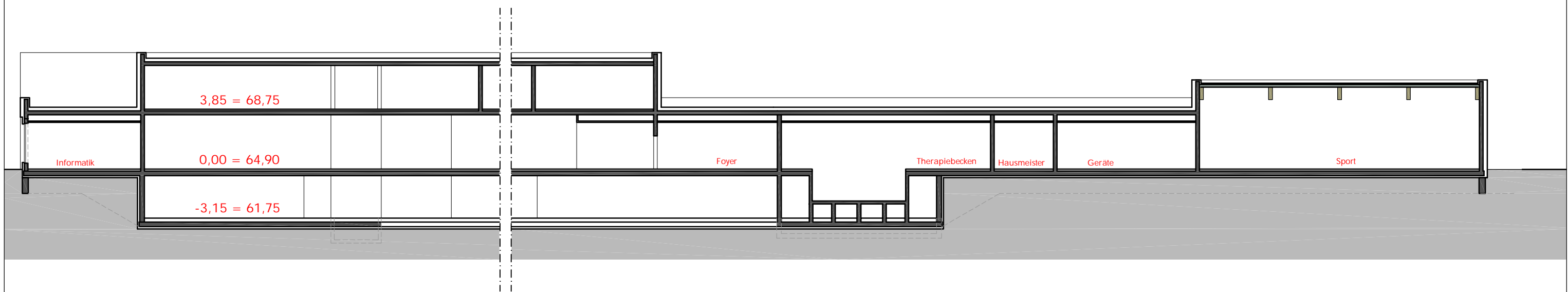
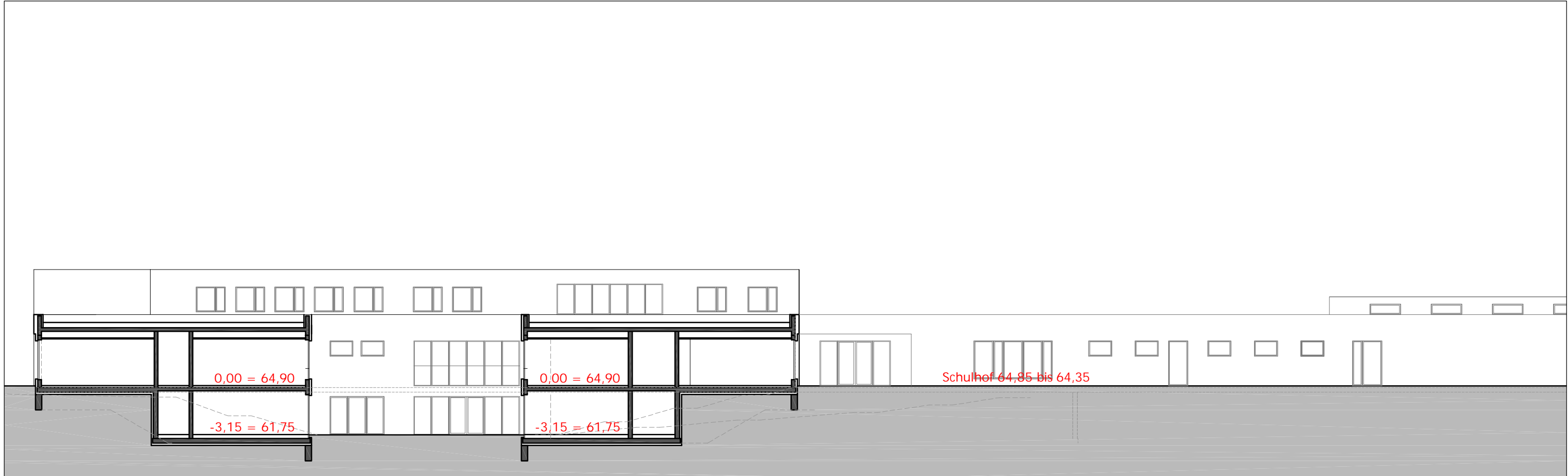
Bus-
stop

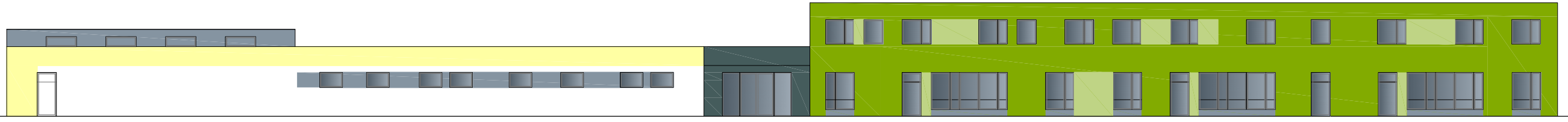
Geräte
45



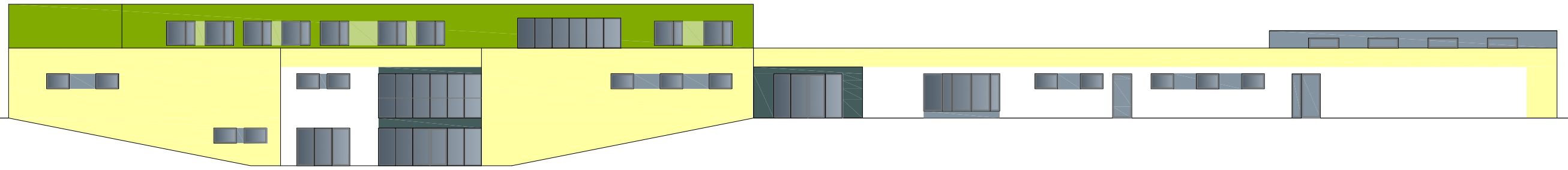
Sportraum 234 (13x18)

Soll A_{Dreh}
= 2,2m²

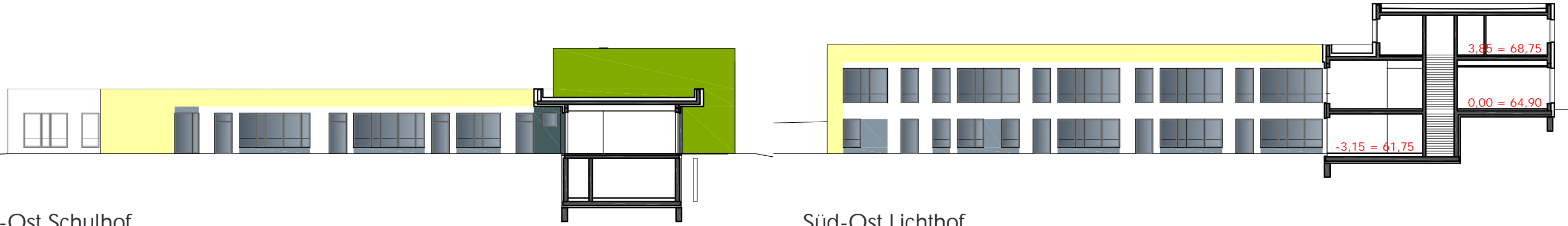




Nord-Ost

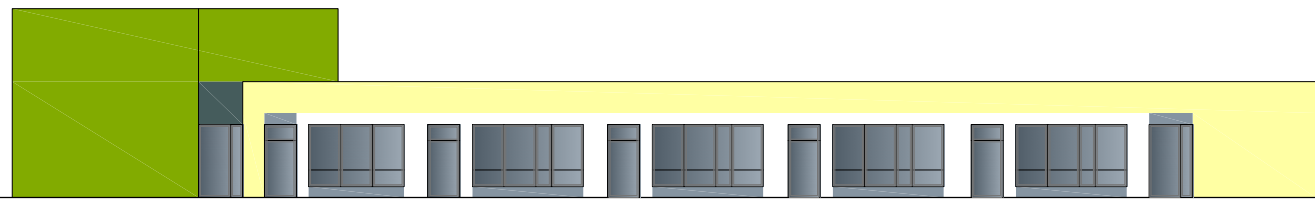


Süd-West



Süd-Ost Schulhof

Süd-Ost Lichthof



Nord-West